

FREEHOLD

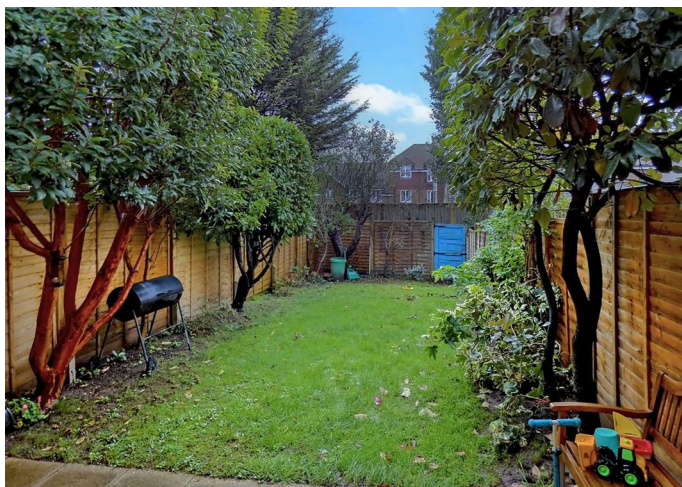


House - Terraced

30 DINGLEY ROAD,
RUSTINGTON,
LITTLEHAMPTON,
WEST SUSSEX, BN16
3PY

£325,000

FEATURES

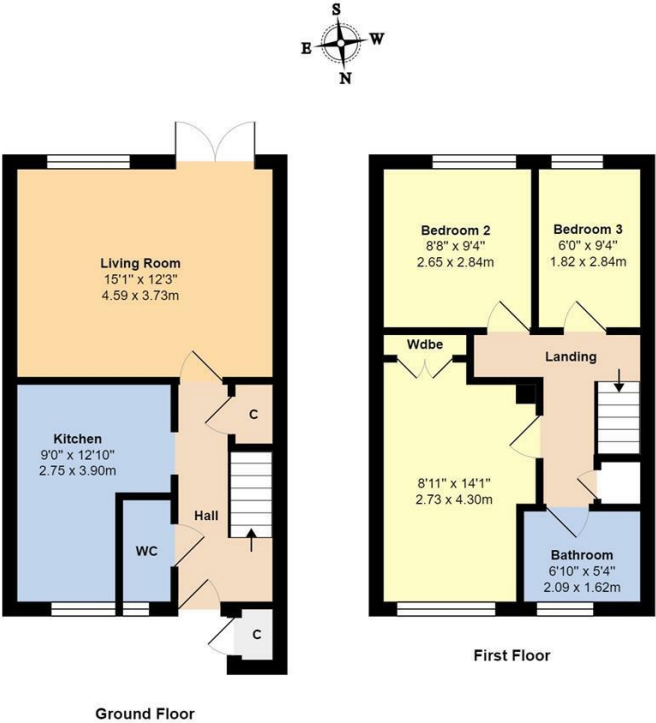


3 Bedroom House - Terraced located in Littlehampton

****NO ONWARD CHAIN**** | Mid-Terraced House | Three Bedrooms | Lounge | Kitchen | Bathroom/WC | Ground Floor WC | Gas Central Heating | PVCu Double Glazing | SOUTH FACING REAR GARDEN | Garage in Compound | Central Location | EER: C

Call us on
01903 770095
rustington@glyn-jones.com
www.glyn-jones.com

Council Tax Band



Total Area: 776 ft² ... 72.1 m²

Whilst every attempt has been made to ensure the accuracy of the floor plan contained here, measurements are approximate and no responsibility is taken for error, omission or mis-statement.
This plan is for illustrative purposes only and should be used as such by any prospective purchaser.
Created by Jtm 2022

Energy Efficiency Rating		
	Current	Potential
Very energy efficient - lower running costs		
(92 plus) A		
(81-91) B		
(69-80) C		
(55-68) D		
(39-54) E		
(21-38) F		
(1-20) G		
Not energy efficient - higher running costs		
England & Wales		EU Directive 2002/91/EC

Agents Note: Whilst every care has been taken to prepare these particulars, they are for guidance purposes only. All measurements are approximate and are for general guidance purposes only and whilst every care has been taken to ensure their accuracy, they should not be relied upon and potential buyers are advised to recheck the measurements.

